

HOW DOES THE LAWS OF NATURE OF SEVERAL BILLIONS OF YEARS? ARE THEY GOING TO DO FROM NOW ON TOO. EVEN AFTER THE EXTERMINATION OF THE MAN.

$$S = S_0 e^{-\frac{2}{\sigma_p} d}$$

Signal strength function of distance.

Signal strength over which it toasts live cells.



DANGER ZONE That is function of your cell phone power. (red hatched distance)

We stay at 0 position and also here is a cell phone and a Wi-Fi Router

Cell Phone signal strength (red)

ELECTROMAGNETIC HAZARD ZONE

Russian Roulette - The bullet are Microwave or HFEMF. (cyan hatched distance)

Wi-Fi router signal strength (magenta)

Wi-Fi router safe area for permanent exposure

distance from Cell Phone
distance to Cell Tower

If anyone has ever said that cell phones is harmless it lied. If you still wish to play with him look at this drawing and learn how does this toy with which try to trick the laws of nature.

This is the main cause of the so called autoimmune disease.

- false -LUPUS
- false - Lyme
- Morgellons
- Fibromialgia
- Multiple Sclerosis

LEGEND
 signal strength of cell phone
 signal strength of Wi-Fi router
 signal strength of cell tower

Chronic Fatigue Syndrome

fetal malformations including a series of disabilities (on Dyslexia for example) and a series of other so called "autoimmune diseases."

IN FACT YOU ARE TOUCH BY SUNSTROKE FROM THE CELL PHONE RAYS.

Safe limit for long time exposure is for signal under 0,1 nW/cm². It is formed a blue line near the axis x (blue line)

Cell Tower signal strength. It is under safe limit of long time exposure (green line)

<http://www.iso.ro>

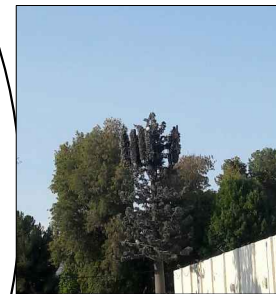
Safe area for the signal from the microwave domain for permanent exposure. Signal Strength < -70dBm or < 0,1 nW/cm² is a division of blue line near the x axis

Cell Phone safe area for permanent exposure

Cell Tower safe area for permanent exposure

ELECTROMAGNETIC HAZARD ZONE Russian Roulette - The bullet are Microwave or HFEMF. (cyan hatched distance)

DANGER ZONE of Cell Tower That is function of your cell tower power. (red hatched distance)



Signal strength over which it toasts live cells.

